

# LF Majedie Global Equity Fund

December 2020

**MAJEDIE**  
Asset Management



## Majedie Asset Management

Majedie Asset Management was founded in 2002. We are an independent active equity specialist, managing high conviction Global, International, US and UK strategies. Employee-ownership, with a strict capacity discipline across a small number of strategies, and a culture of co-investment in our funds, aligns our interests with those of our clients. Our simple objective is to make money for our clients, responsibly.

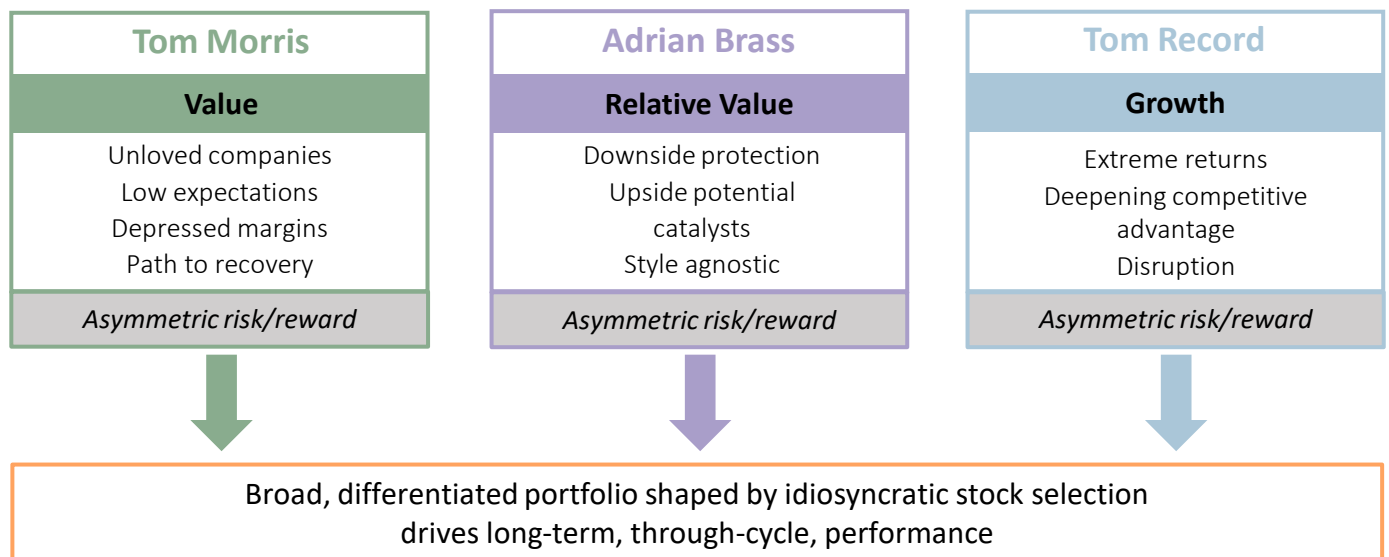
### OVERVIEW

- Capturing style extremes and turning points**  
 Three managers with complementary styles in one dynamic portfolio
- Our philosophy embraces uncertainty**  
 Opportunity for truly active investors to add value through analysis
- Long-term, fundamental, high conviction investment process**  
 Identifying stocks where the long-term risk/reward is jarringly skewed to the upside
- Integrated ESG approach**  
 Materiality assessments and resiliency scores
- No innate style or country bias, not skewed to one type of stock**  
 Capturing Developed and Emerging market opportunities

### KEY FACTS

Launch Date	30/06/14
Benchmark Index	MSCI ACWI
Fund Size	USD 73m
Strategy Size	USD 149m
Holdings	88
Status	UK UCITS
Fund Domicile	UK
Base Currency	USD
Pricing Frequency	Daily at noon
Swing rates (%)	0.05 / 0.05

### CAPTURING EXTREMES ACROSS THE STYLE SPECTRUM



FUND PERFORMANCE (NET %) (to 31 December 2020)	3 MONTHS	1 YEAR	3 YEARS (P.A.)	5 YEARS (P.A.)	SINCE INCEPTION
X Accumulation (USD)	21.1	31.9	14.6	14.2	93.9
MSCI ACWI (NDR)	14.7	16.3	10.1	12.3	71.0
Relative	+6.4	+15.6	+4.6	+1.9	+22.8

DISCRETE YEARS (NET %) 12 MONTHS ENDING:	DEC 15	DEC 16	DEC 17	DEC 18	DEC 19	DEC 20	SINCE INCEPTION (P.A.) (to 31 December 2020)
X Accumulation (USD)	2.0	4.1	23.7	-9.4	25.9	31.9	10.7
MSCI ACWI (NDR)	-2.4	7.9	24.0	-9.4	26.6	16.3	8.6
Relative	+4.4	-3.8	-0.2	+0.1	-0.7	+15.6	+2.1

# LF Majedie Global Equity Fund

December 2020

**MAJEDIE**  
Asset Management

## FUND MANAGERS



**Tom Record** joined from *Baillie Gifford* in 2014, where he helped build and co-manage \$30bn of assets in international

equity and GEM portfolios.

He holds Master of Arts and Master of Natural Sciences degrees from Pembroke College, Cambridge. CFA Charter holder with 19 years' investment experience.



**Adrian Brass** joined from *Fidelity* in 2014, where he established a London-based US franchise and led the

growth to \$9bn of US equity assets - including the *America Fund* - built a team of 18 analysts.

He holds a Bachelor of Sciences degree in Economics & Politics from the University of Bristol. CFA charter holder with 26 years' investment experience.



**Tom Morris** joined as a graduate in 2009 and is co-manager of our global long/short equity *Tortoise Fund*.

He holds Master of Sciences degree in Natural Sciences, specialising in Physics, from St Catharine's College, Cambridge. CFA charter holder with 12 years' investment experience.

## THOUGHT LEADERSHIP – LINKS TO RECENT COMMENTARY



### Global Outlook Video

Adrian Brass reflects on the hard decisions taken by the three managers throughout 2020, and how 2021 promises to be an exciting year ahead for ...



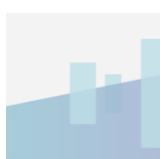
### The Art of Keeping Calm

Media and political framing of Covid-19 has often been at odds with the science, Tom Record considers the cognitive biases that make focusing on the data so difficult in



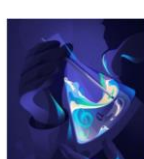
### Long-lasting Behavioural Changes Beyond the Pandemic

Tom Record and Tom Morris consider the sorts of long-lasting behavioural changes that could stay with us beyond the Covid-19 pandemic.



### Global Equities Webcast - Small Can Be Beautiful

Majedie's Global Team discuss how small agile businesses now offer real attractions for patient investors seeking more diverse sources of return for their ...



### Generally Speaking

Specialists play an important role in many fields. When it comes to investing, however, Tom Hosking believes generalists could have the advantage.



### Inflation: the long-lasting legacy of Covid-19?

Lessons from economic history suggest higher inflation is the likely eventual outcome to the fiscal and monetary deluge seen in response to Covid-19, writes Tom Hosking.

## Share Class Information

SHARE CLASS	ISIN CODE	SEDOL CODE	BLOOMBERG CODE	INITIAL CHARGE	ONGOING CHARGE	MIN INITIAL INVESTMENT	MIN ADDITIONAL INVESTMENT
X Accumulation (USD)	GB00BN31TD61	BN31TD6	MAJGEXU LN	0.00%	0.65%	\$100,000	\$5,000
X Accumulation (GBP)	GB00BN31TC54	BN31TC5	MAJGEXG LN	0.00%	0.65%	£100,000	£5,000

Source: Majedie

The Majedie funds and services described in this presentation are not available or offered generally in the United States or to U.S. Persons and may not, except in a transaction which does not violate U.S. securities laws, be directly or indirectly offered or sold in the United States or to any U.S. Person. In particular, the Majedie funds have not been and will not be registered for public distribution in the United States. Issued by Majedie Asset Management Limited. Majedie Asset Management Limited is authorised and regulated by the Financial Conduct Authority of the United Kingdom, and is registered as an investment adviser with the Securities and Exchange Commission. For private circulation only. The statements and predictions expressed in this document represent the opinions of the author(s), and their view on the likely impact of certain events. This document is not intended to be an offer or solicitation of an offer to buy or sell securities. This document does not constitute investment advice or an investment recommendation. Whilst all reasonable care has been taken in the preparation of this document, no responsibility can be accepted for the accuracy or completeness of the information herein or upon which opinions herein have been based. All rights in the referenced index are vested in the index owner and/or its licensors, who do not accept any liability for any errors or omissions in the index or any underlying data. Certain investments or investment services mentioned may not be suitable for all clients. **Please note that the value of investments and the income derived from them may fall as well as rise and you may get back less than originally invested. Past performance is not necessarily a guide to future performance. The return on investments may increase or decrease as a result of currency fluctuations.**

10 Old Bailey, London EC4M 7NG | Tel: +44 (0)20 7618 3900 | Fax: +44 (0)20 7618 3933 | Email: [info@majedie.com](mailto:info@majedie.com) | Web: [www.majedie.com](http://www.majedie.com)

Authorised and regulated by the Financial Conduct Authority